










## 10x10 Modular System (Straight) Setup Instruction Sheet

### Step 1: Unpack the Modular from its case. Make sure you have all the parts

Posts x 4		Middle rails x 2		Wrench (9/16) x 1	
Cylinders x 2		Side rails x 4		Torch x 1	
Bases x 2		Pole Plastic Caps x2		Fabric x 1	

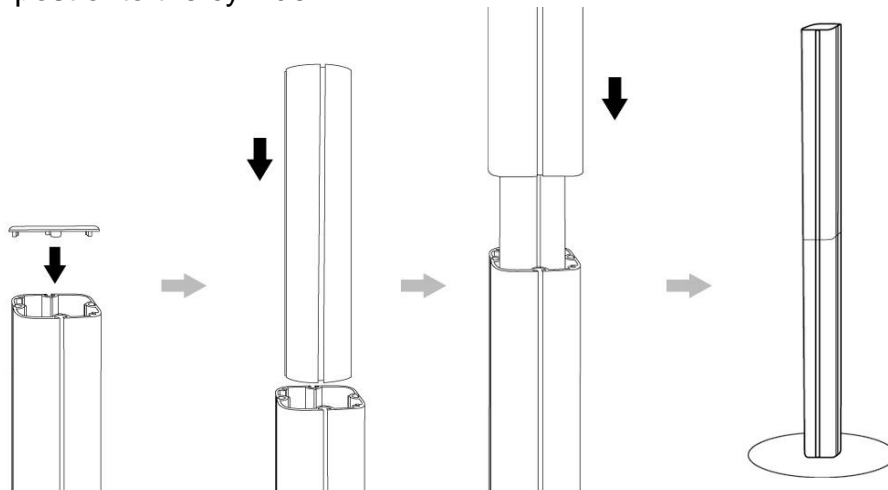
### Step 2: Setting up the Base

- 1) Unscrew the ring and the bolt from the bottom post
- 2) Attach the base. Replace ring and bolt. Tighten with wrench.



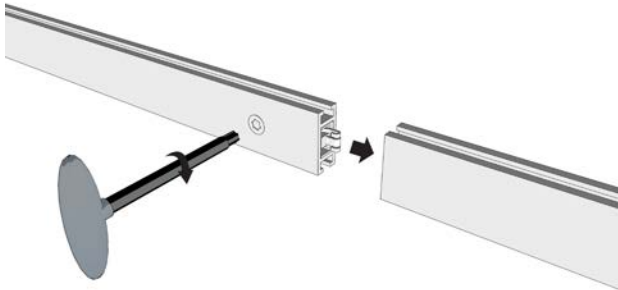
### Step 3: Setting up the top post

- 1) Place plastic cap on top
- 2) Insert the cylinder onto the bottom post
- 3) Slide the top post onto the cylinder.

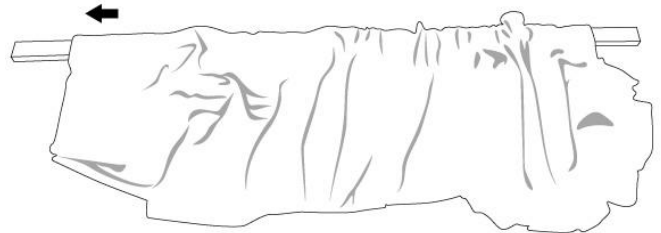


### Step 4: Setting up the Upper Rail

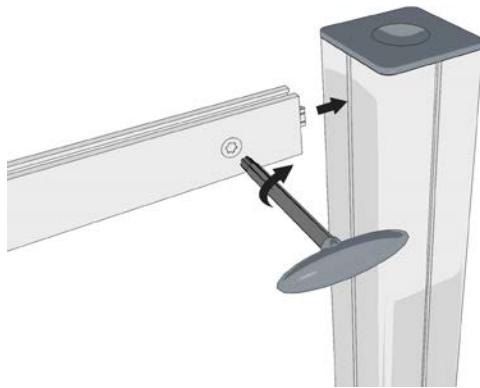
1) Connect the side rail to the middle rail. Using the torch, turn 90° clockwise to lock the rails.  
*Note: The middle rail has tongues on either end.*



2) String the rail into the pocket on the fabric.  
*Note: Make sure the trough is on top.*

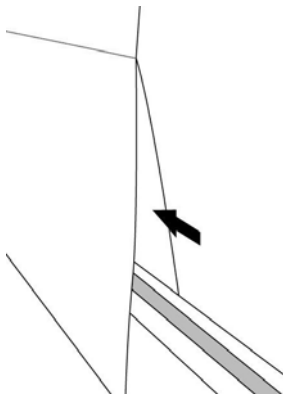


3) Insert the unit into the post. Using the torch, turn 90° clockwise to lock the rails.  
4) Attach the other side bar and lock onto the other post.

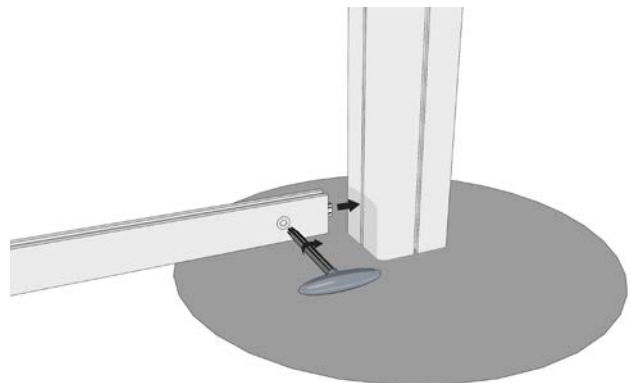


### Step 5: Setting up the Lower Rail

1) Connect all 3 bars together and string it through the fabric.

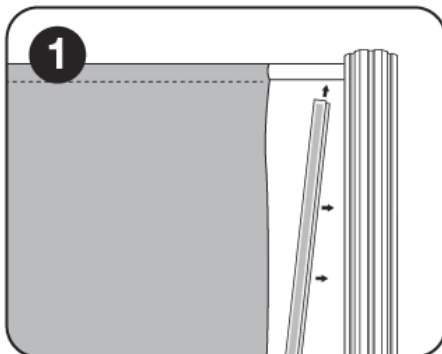
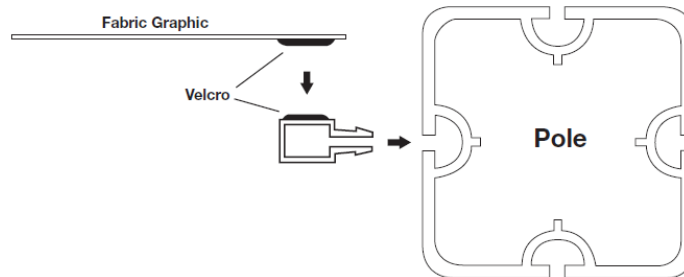


2) Adjust bottom rail to desired height before locking it into place.

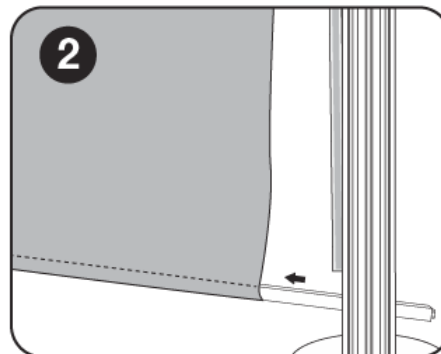


## Step 6: Install Fabric Retainer

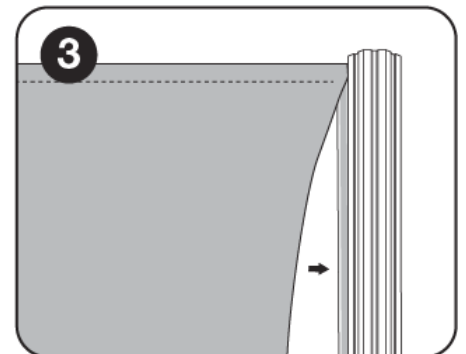
Insert the Fabric Retainers in the poles and secure the Fabric piece using the Velcro strips.



1 Slide fabric retainer into pole under top beam.



2 Slide bottom beam into fabric pocket.

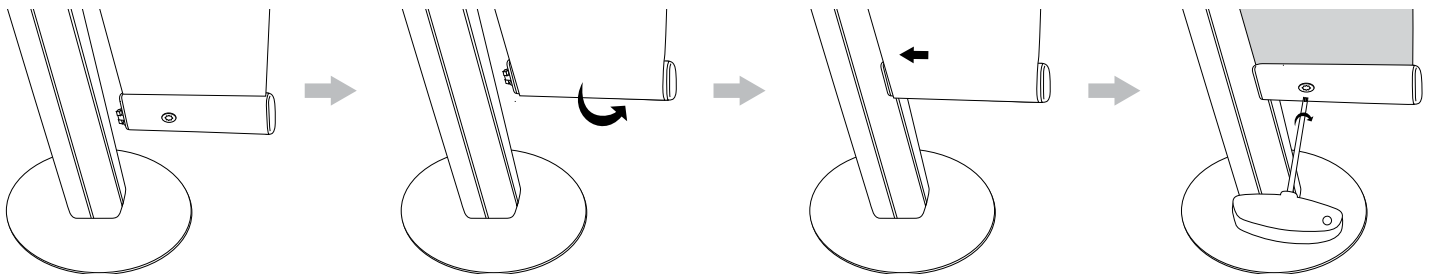


3 Pull fabric flush against the pole and connect velcro together.

## Step 7: Setting up back Wing Kits

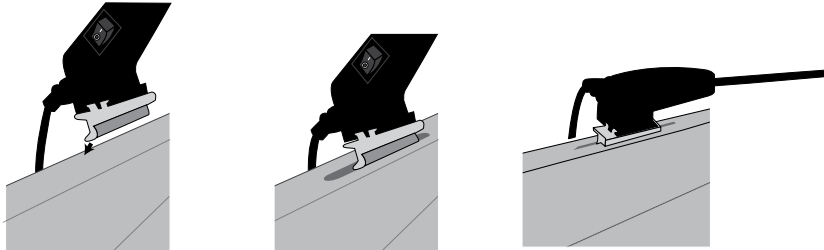
- 1) Insert a stick through the top Wing Fabric slot.
- 2) Insert the stick with the Wing Fabric through the trough of a 30cm beam.
- 3) Repeat above procedures for the bottom of the Wing Fabric.
- 4) Attach and secure the Wing Kit unit to the back side of the pole of the back wall frame. Repeat for the other pole.

\*\*\*Rotate the beams towards the inside as shown below before securing.

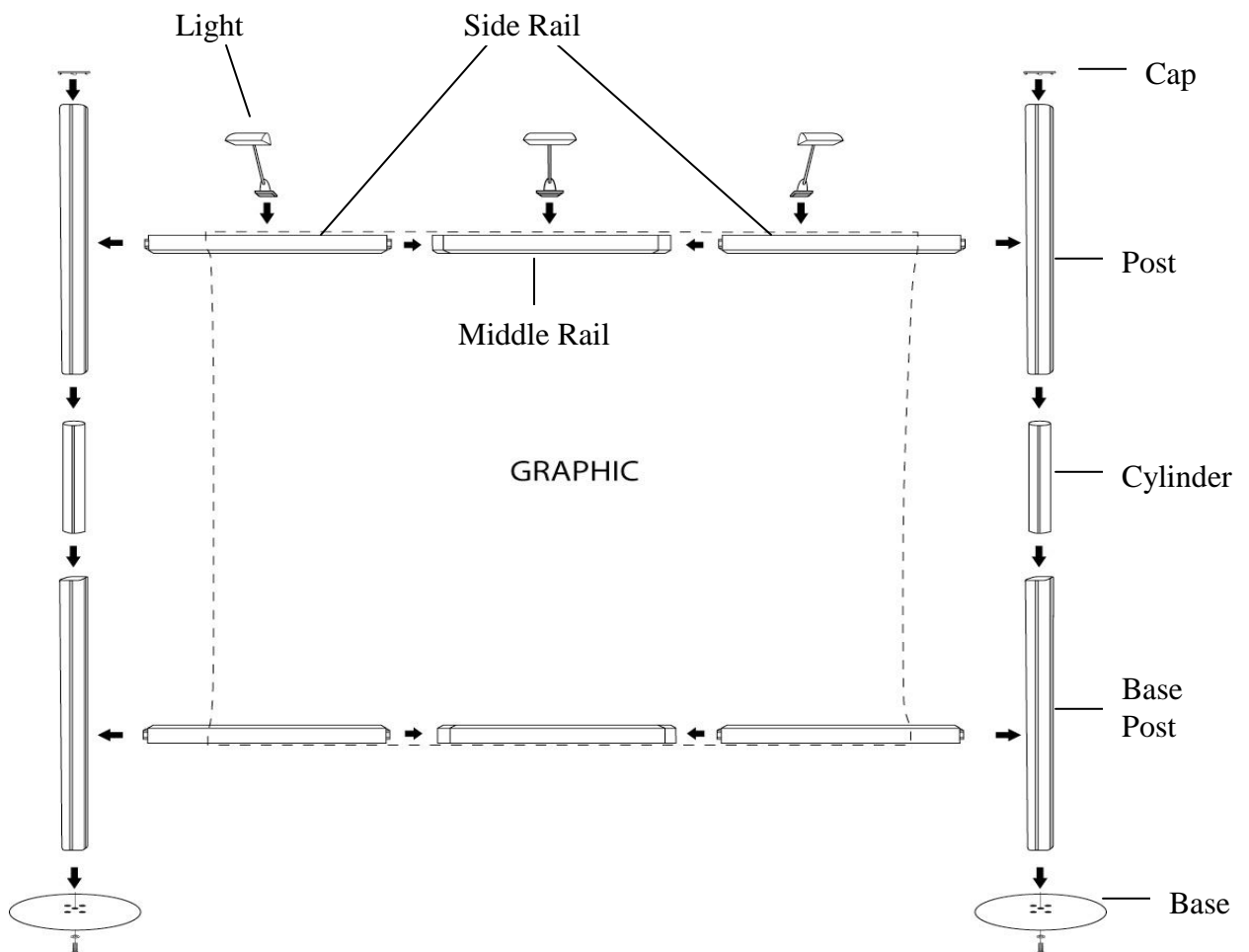


## Step 8: Setting up the lights

1) Sit the lights on top of the fabric and into the troughs on the upper rail. **Make sure the light is sitting securely first!**



## Diagram



**To Disassemble:** Reverse the Set Up instructions.



**How to wash:** The fabric print can be placed into the washing machine with a small amount of detergent and then dried in the dryer using gentle tumble and low heat settings.