










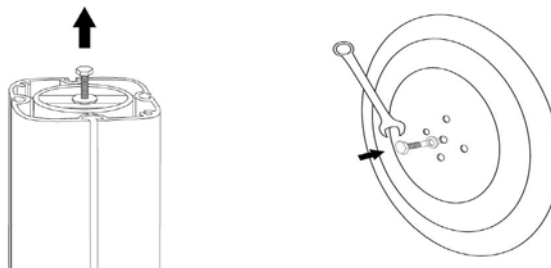
10ftx20ft Extrusion Modular (Straight) Setup Instruction Sheet

Step 1: Unpack the Modular from its case. Make sure you have all the parts

Poles x 6		60cm Beams x 12		Wrench (9/16) x 1	
Cylinders x 3		Connectors x 8		Torch x 2	
Bases x 3		Wing Kit x 2 pairs		Fabric x 2	

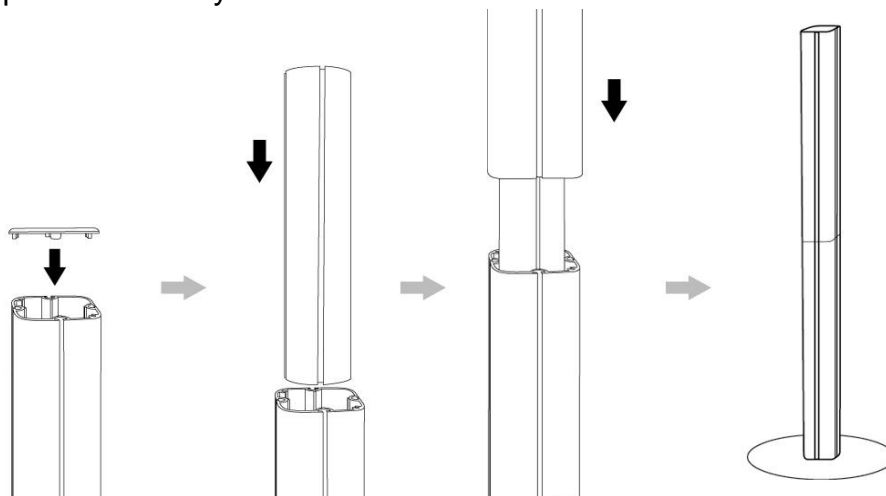
Step 2: Setting up the Base

- 1) Unscrew the ring and the bolt from the bottom pole
- 2) Attach the base. Replace ring and bolt. Tighten with wrench.



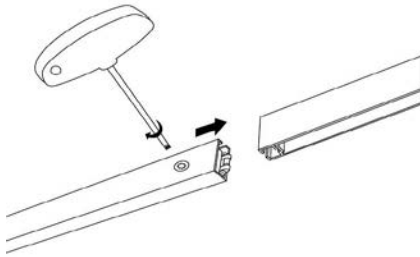
Step 3: Setting up the poles

- 1) Insert the cylinder into the bottom pole
- 2) Slide the top pole onto the cylinder.

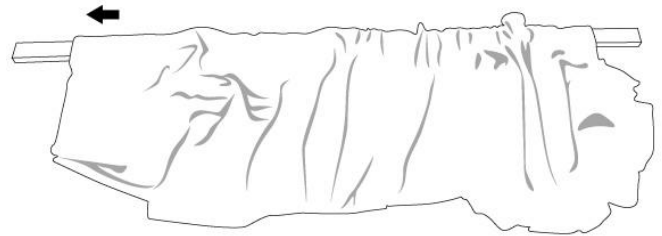


Step 4: Setting up the Top Beam

1) Connect three beams and two connectors together to make a 206cm unit. Use the torch; turn 90° clockwise to lock the beams.



2) String the beam unit into the pocket on the fabric.

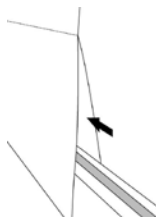


3) Insert the unit into the poles. Using the torch, turn 90° clockwise to lock the beams.

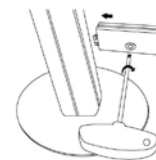


Step 5: Setting up the Lower Beam

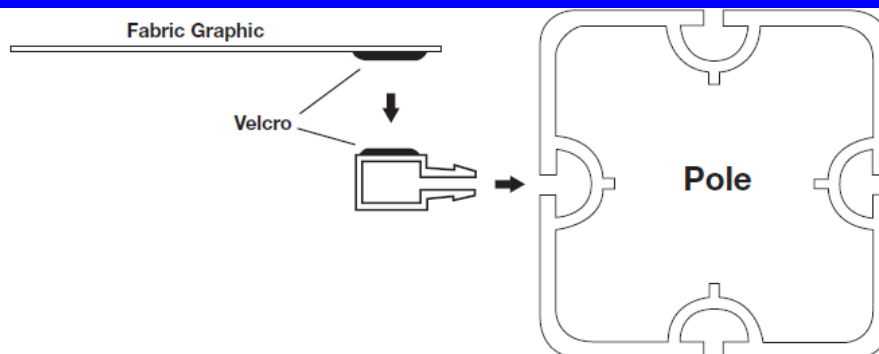
1) Put together another 206cm beam unit and string it through the bottom of fabric.

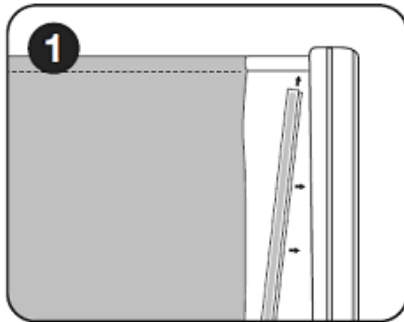


2) Lock the bottom beam into place.

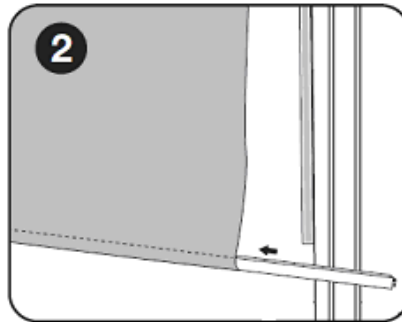


Step 6: Installing Fabric Retainer and Securing the Fabric Pieces

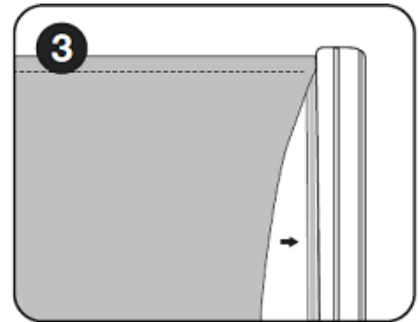




Slide fabric retainer into pole under top beam.



Slide bottom beam into fabric pocket.

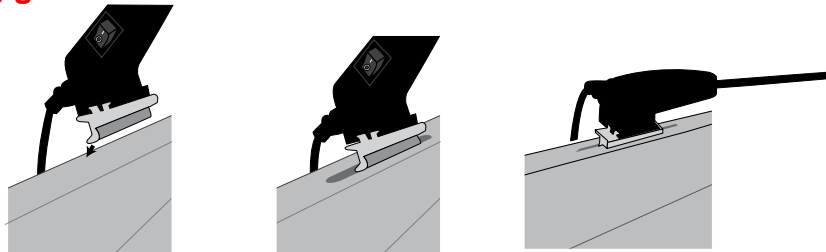


Pull fabric flush against the pole and connect velcro together.

- 1) Secure the fabric pieces onto the fabric retainers with the Velcro lining.

Step 7: Setting up the lights

- 1) Sit the lights on top of the fabric and into the top beam slot. **Make sure the light is sitting securely before letting go!**

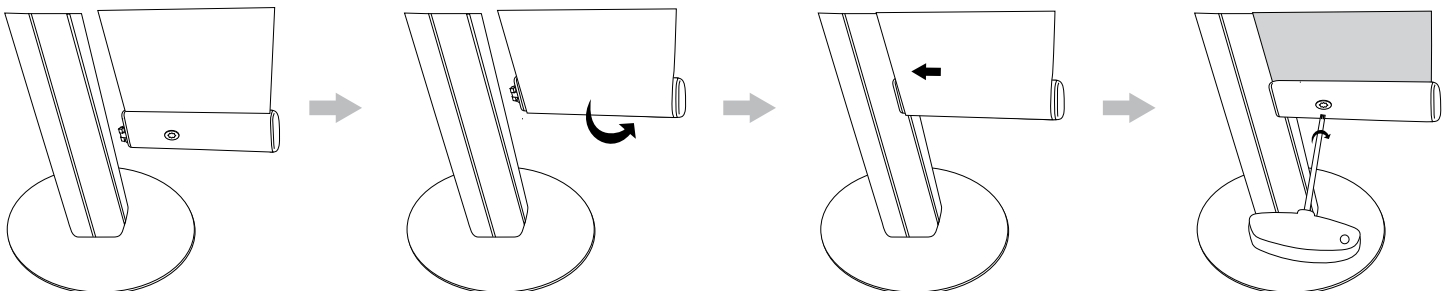


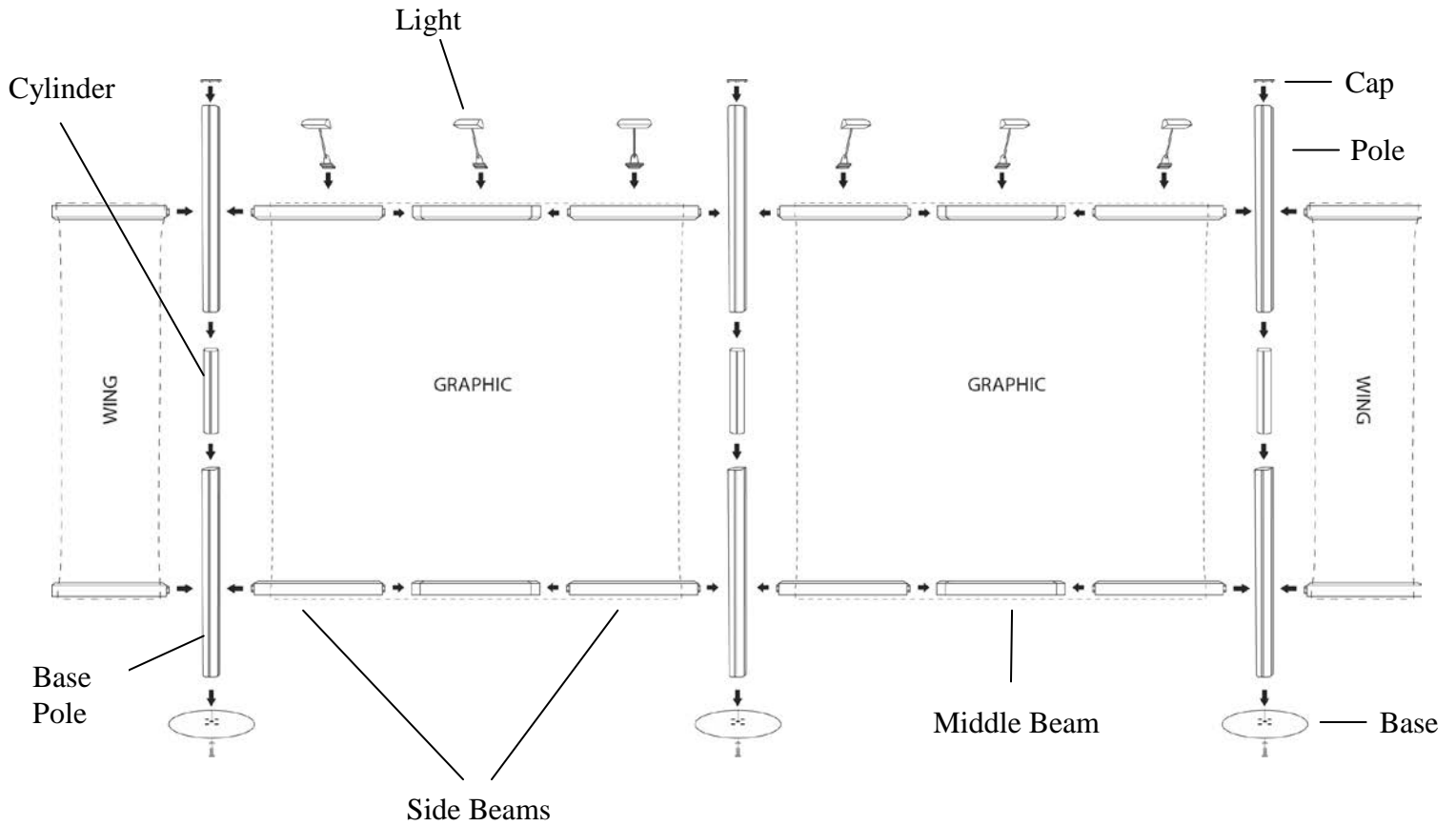
Step 8: Setting up adjacent wall

- 1) Repeat steps 1-7 for setting up the adjacent wall.

Step 9: Setting up the Wing Kits

- 1) Unroll the Wing Kits.
- 2) Roll the top and bottom beam so that the beams can only be seen from the back.
- 3) Use the torch to lock the beams onto the outside poles. Make sure Wing Kit unit is secured.





To Disassemble: Reverse the Set Up instructions.



How to wash: The fabric print can be placed into the washing machine with a small amount of detergent and then dried in the dryer using gentle tumble and low heat settings.