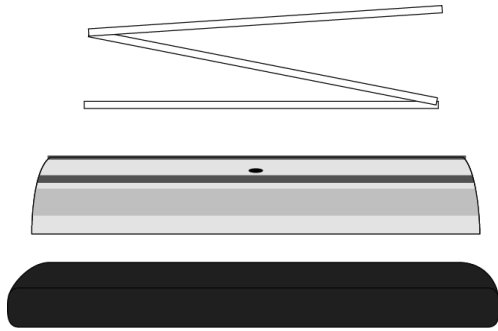
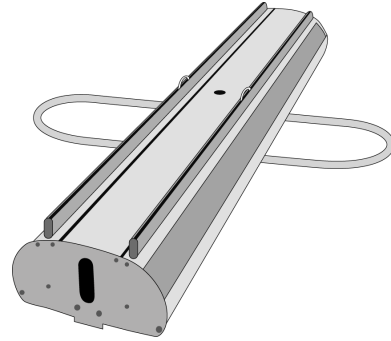


## Double Sided Retractable Banner Setup Instruction Sheet (Method A)

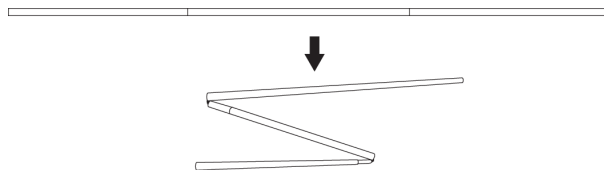
**Step 1:** Take everything out of the case (1 banner case, 1 set of pole)



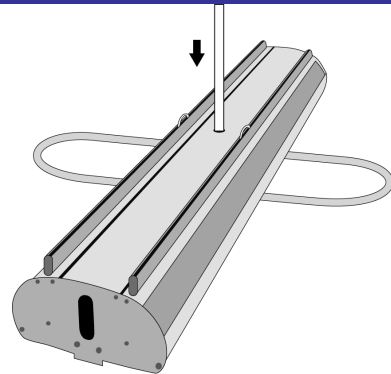
**Step 2:** Turn the leg 90 degrees so it looks like a cross when you look at it from the top and place it on the floor.



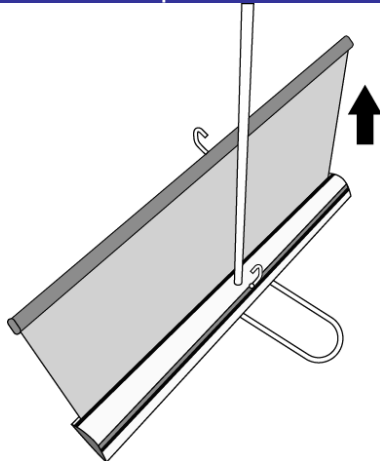
**Step 3:** Connect the three-section pole into one long pole



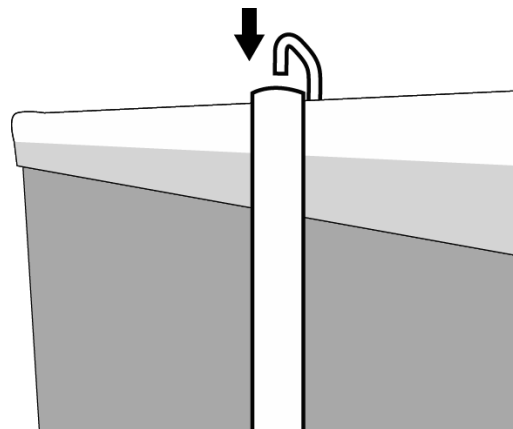
**Step 4:** Slide/Twist the pole into the hole on the banner stand. **Make sure it goes all the way down!**



**Step 5:** Stand to the side of the stand. Pull up the banner and place the hook into the pole



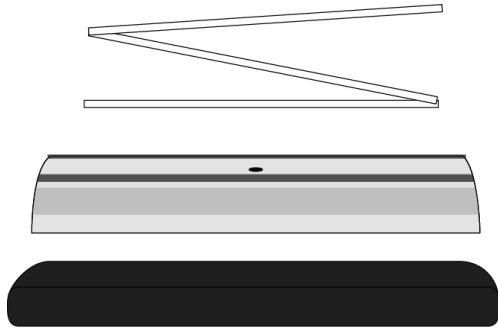
**Step 6:** Repeat step 5 for the opposite banner.



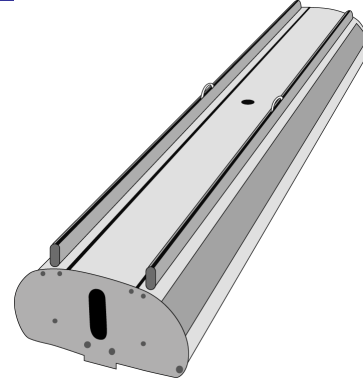
**To disassemble:** Reverse Step 1 through 6. **DO NOT** let go of the banner to ensure banner retracts smoothly.

## Double Sided Retractable Banner Setup Instruction Sheet (Method B)

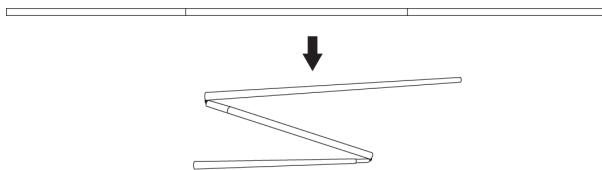
**Step 1:** Take everything out of the case (1 banner case, 1 set of pole)



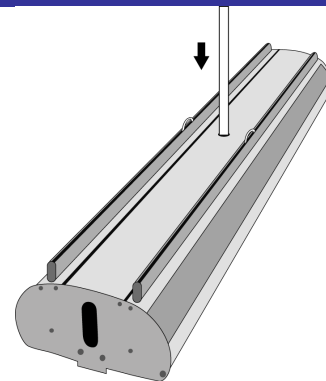
**Step 2:** Place the banner stand on the floor without turning the leg out.



**Step 3:** Connect the three-section pole into one long pole

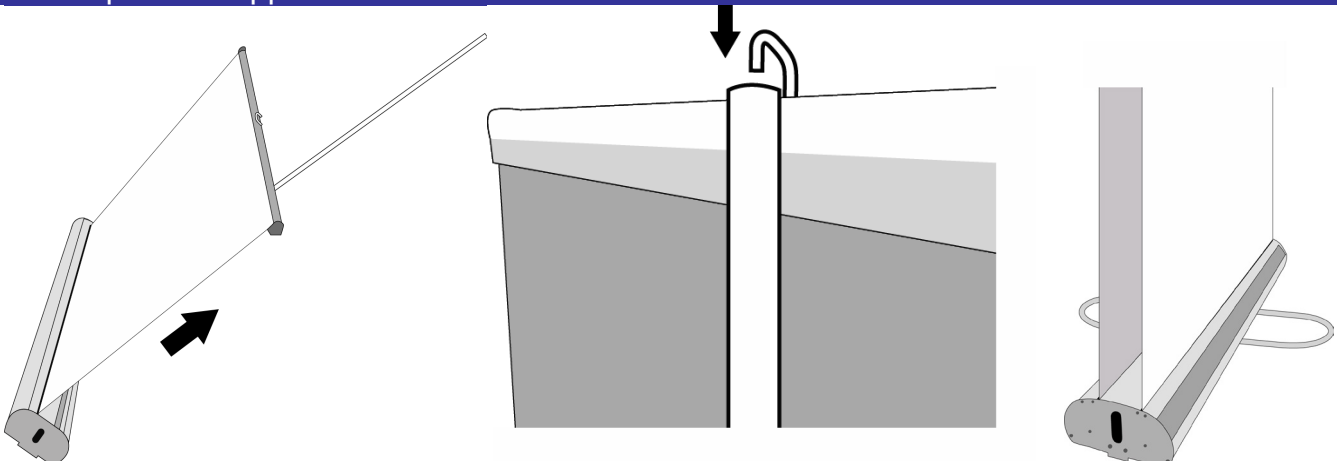


**Step 4:** Slide/Twist the pole into the hole on the banner stand. **Make sure it goes all the way down!**



**Step 5:** Stand to the back of the stand. Tilt the banner stand at 45 degree and pull up the banner and place the hook into the pole. Repeat this step for the opposite banner.

**Step 6:** Turn the leg 90 degrees for stability



**To disassemble:** Reverse Step 1 through 6. **DO NOT** let go of the banner to ensure banner retracts smoothly.